

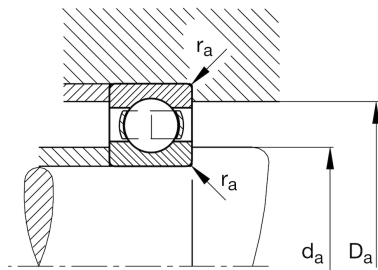
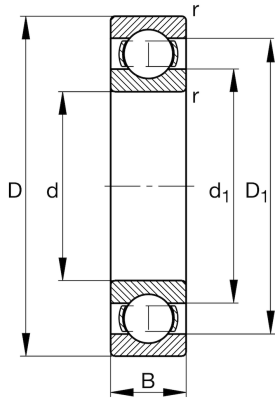
FAG

6212-H-SN

Deep groove ball bearing

Schaeffler ID:
0947482250000Deep groove ball bearing 62...H, single
row, H-Series, steel sheet metal cage

Technical information

**Main Dimensions & Performance Data**

d	60 mm	Bore diameter
D	110 mm	Outside diameter
B	22 mm	Width
C_r	47.760 N	Basic dynamic load rating, radial
C_{0r}	32.920 N	Basic static load rating, radial
C_{ur}	1.970 N	Fatigue load limit, radial
n_G	8.600 1/min	Limiting speed
n_{gr}	6.900 1/min	Reference speed
	0,807 kg	Weight

Dimensions

r_{min}	1,5 mm	Minimum chamfer dimension
D_1	94,5 mm	Shoulder diameter outer ring
d_1	75,7 mm	Shoulder diameter inner ring

Mounting dimensions

$d_{a min}$	69 mm	Minimum diameter shaft shoulder
$D_{a max}$	101 mm	Maximum diameter of housing shoulder
$r_{a max}$	1,5 mm	Maximum fillet radius

Calculation factors

f_0	14,5	Calculation factor
-------	------	--------------------

Temperature range

T_{min}	-30 °C	Operating temperature min.
T_{max}	120 °C	Operating temperature max.